



Certificate of Analysis

10 MARCH 2025

WHITE POWDER / 2EEC6 (F08F5)



Client:	WESTMAN PRODUCTS	SAMPLE SET:	MWC-250303-A
Sample Type:	Powder	Prepped By:	Keith C.
Sample Weight:	200mg	Acquisition Method:	MIT-EVO_R2025-01
Dilution:	1.0	Testing ID:	250303-A_0008.D
Vial:	Vial 48	Date Processed:	03/04/2025

ID/POTENCY

#	Analyte	RT (min)	Area (mAU*s)	Amt (µg/mL)	Alkaloid	Total %
1	Mitragynine	14	3500	160	C ₂₃ H ₃₀ N ₂ O ₄	1.60
2	7-Hydroxymitragynine	6	N/D	N/D	C ₂₃ H ₃₀ N ₂ O ₅	N/D
3	Paynantheine	10	907	44	C ₂₃ H ₂₈ N ₂ O ₄	0.44
4	Speciogynine	11	669	33	C ₂₃ H ₃₀ N ₂ O ₄	0.33
1	Mitragynine	14	516	25	C ₂₃ H ₃₀ N ₂ O ₄	0.25

BIOLOGICAL

USP NF
Total Viable Count

USP.NF
Total Yeast

USP NF
Total Mold

Sample	Lot #	Spec	Result	Spec	Result	Spec	Result
White Powder	2EEC6 (F08F5)	500k CFU/g	PASS	POS/NEG	NEG	POS/NEG	NEG

FDA(BAM)CH.4
Coliform

USP NF
E. Coli

USP NF
Salmonella

USP NF
Staphylococcus

Sample	Lot #	Spec	Result	Spec	Result	Spec	Result	Spec	Result
White Powder	2EEC6 (F08F5)	10k CFU/g	PASS	POS/NEG	NEG	POS/NEG	NEG	POS/NEG	NEG

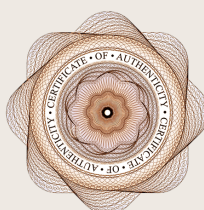
HEAVY METALS

Product #	Lot #	Metals	Spec	Results
White Powder	2EEC6 (F08F5)	Arsenic	< 10,000 ppb	170 ppb
		Cadmium	< 4,100 ppb	10 ppb
		Lead	< 900 ppb**	700 ppb
		Mercury*	< 300 ppb	10 ppb

Mitragynine Content: **16** mg/g

Heavy Metals: **PASS**

Biological: **PASS**



SEAL OF AUTHENTICITY

VERIFIED BY:

Quality Assurance:



USP HEAVY METALS LIMITS

* Methyl mercury is included in total Mercury. Method AOAC 993.14 is equivalent to method ICP-MS USP <730>.

** California's Proposition 65 set up overly restrictive limits for many natural plant materials in relation to lead. There are many plants that have higher levels of lead than is acceptable in the State of California. If your CA result comes back as a "HI-LEAD", you may be required to place notices on your material, or it may be a material that cannot technically be sold for consumption in the state of California.

United States Pharmacopeia (USP) Limit for Nutritional Supplements:

- Arsenic 3.000 ppm / 3000.000 ppb
- Cadmium 3.000 ppm / 3000.000 ppb
- Lead 10.000 ppm / 10000.000 ppb
- Mercury 3.000 ppm / 3000.000 ppb

California Proposition 65 Daily Limits for Heavy Metals:

- Arsenic 10 ppm / 10,000.000 ppb
- Cadmium 4.1 ppm / 4,100.000 ppb
- Lead 0.5 ppm / 500.000 ppb
- Methyl Mercury 0.3 ppm / 300.000 ppb

For labels with a single daily dose of 500mg, the PPM in products cannot be higher than:

- Arsenic = 20.000 ppm / 20,000.000 ppb
- Cadmium = 8.000 ppm / 8,000.000 ppb
- Lead = 0.900 ppm / 900.000 ppb
- Mercury = 0.600 ppm / 600.000 ppb

FDA Tolerable Daily Diet Lead intake:

- Children <6 years old = 6.000 ppm / 6000.000 ppb
- Pregnant women = 25.000 ppm / 25000.000 ppb
- Adults = 75.000 ppm / 75000.000 ppb